

WILD TREE

A PORTION OF THE SOUTHWEST QUARTER OF SECTION 26, TOWNSHIP 1 SOUTH, RANGE 4 EAST OF THE GILA AND SALT RIVER BASE AND MERIDIAN, MARICOPA COUNTY, ARIZONA.

DEDICATION: STATE OF ARIZONA COUNTY OF MARICOPA

KNOW ALL MEN BY THESE PRESENTS:
THAT FIRST INTERSTATE BANK OF ARIZONA, N.A., AND GERMAIN H. BALL, AS CO-TRUSTEES OF THE LEONA HARMON RICKENBACH TRUST UNDER AGREEMENT DATED OCTOBER 17, 1946, AS AMENDED, HAVE SUBDIVIDED UNDER THE NAME OF "WILD TREE," A PORTION OF THE SOUTHWEST QUARTER OF SECTION 26, TOWNSHIP 1 SOUTH, RANGE 4 EAST OF THE GILA AND SALT RIVER BASE AND MERIDIAN, MARICOPA COUNTY, ARIZONA, THE SOUTHWEST QUARTER OF SECTION 26, TOWNSHIP 1 SOUTH, RANGE 4 EAST OF THE GILA AND SALT RIVER BASE AND MERIDIAN, MARICOPA COUNTY, ARIZONA, INTO SEVEN TRACTS, TRACTS AND EASEMENTS OF THE LOTS, STREETS, TRACTS AND EASEMENTS CONSTITUTING SAME, AND THAT EACH LOT, STREET, TRACT AND EASEMENT SHALL BE KNOWN BY THE NUMBER, NAME OR LETTER GIVEN TO EACH RESPECTIVELY ON THIS PLAN. AS CO-TRUSTEES OF THE LEONA HARMON RICKENBACH TRUST UNDER AGREEMENT DATED OCTOBER 17, 1946, AS AMENDED, WE HEREBY DEDICATE TO THE PUBLIC FOR USE AS FIRST INTERSTATE BANK OF ARIZONA, N.A. AND TRACTS TO BE KNOWN BY THE NAME OF "WILD TREE" AS SHOWN ON THE ABOVE DESCRIBED PRELIMINARY PLANS, SUCH THAT THE STREETS INCLUDED IN THE ABOVE DESCRIBED PRELIMINARY PLANS "A" THROUGH "G" ARE HEREBY DEDICATED TO THE "WILD TREE HOMEOWNERS' ASSOCIATION" FOR THE PURPOSES OF DRAINAGE AND LANDSCAPING AND FOR THE USE AND ENJOYMENT OF THE MEMBERS OF THE "WILD TREE HOMEOWNERS' ASSOCIATION" AND ARE NOT DEDICATED TO THE GENERAL PUBLIC. THE MAINTENANCE OF LANDSCAPING WITHIN THE PUBLIC RIGHT-OF-WAY SHALL BE THE RESPONSIBILITY OF THE HOMEOWNERS' ASSOCIATION OR THE ADJOINING LOT/TRACT/PARCEL OWNER.

FIRST INTERSTATE BANK OF ARIZONA, N.A., AND GERMAIN H. BALL, AS CO-TRUSTEES OF THE LEONA HARMON RICKENBACH TRUST UNDER AGREEMENT DATED OCTOBER 17, 1946, AS AMENDED, HEREBY GRANT TO THE CITY OF CHANDLER, ARIZONA, ORGANIZED AND INCORPORATED UNDER AND BY VIRTUE OF THE LAWS OF THE STATE OF ARIZONA, AN EASEMENT FOR:

AVIATION PURPOSES OVER AND ACROSS THE LAND IN CONNECTION WITH FLIGHTS FROM 350 FEET ABOVE THE SURFACE TO AN INFINITE HEIGHT ABOVE THE SAME WHICH AIRCRAFT EASEMENT SHALL INCLUDE BUT NOT BE LIMITED TO: USE OF AVIATION PURPOSES; FUELS; DUST FIEE AND AVIATION PARTICLES; AND ALL OTHER EFFECTS THAT MAY BE CAUSED BY THE OPERATION OF AIRCRAFT; AND THE OWNER DOES FURTHER RELEASE AND DISCHARGE ON STELLAR APPARATUS; AND THE OWNER DOES FURTHER RELEASE AND DISCHARGE ON THE CITY, OF AND FROM ANY LIABILITY FOR ANY AND ALL OF THE ABOVE AND FOR THE INFINITE HEIGHT ABOVE SAME, WHETHER SUCH DAMAGE SHALL ORIGINATE FROM NOISE, VIBRATION, DUST, FUEL, AND LUBRICANT PARTICLES, AND ALL OTHER EFFECTS THAT MAY BE CAUSED BY THE OPERATION OF AIRCRAFT; AND TAKING OFF FROM OR OPERATING FROM OR OPERATING AT OR ON THE STELLAR APPARATUS.

THIS INSTRUMENT DOES NOT RELIEVE THE OWNERS OR OPERATIONS OF AIRCRAFT FROM LIABILITY FOR DAMAGE OR INJURY TO PERSON OR PROPERTY CAUSED BY FALLING PHYSICAL OBJECTS FROM AIRCRAFT, EXCEPT AS STATED HEREIN WITH RESPECT TO NOISE, FUELS, DUST, FUEL, AND LUBRICANT PARTICLES.

THE AVIATION EASEMENT AND RELEASE SHALL BE BINDING UPON SAID OWNER AND HIS HEIRS, ASSIGNS AND SUCCESSORS IN INTEREST TO THE "WILD TREE" PROPERTY, AND IT IS FURTHER AGREED THAT THIS EASEMENT SHALL BE A COVENANT RUNNING WITH THE LAND.

IN WITNESS WHEREOF:

Germain H. Ball, AS CO-TRUSTEE OF THE LEONA HARMON RICKENBACH TRUST UNDER AGREEMENT DATED OCTOBER 17, 1946, AS AMENDED, HAS HEREBY CAUSED ITS CORPORATE NAME TO BE AFFIXED TO BE ATTESTED BY THE SIGNATURE OF THE UNDERSTANDING OFFICER THEREUNTO DULY AUTHORIZED.

Loyle Young DATE 2/4/94

IN WITNESS WHEREOF:

Germain H. Ball DATE 2/4/94

RATIFICATION:

BY THIS RATIFICATION, _____ DULY ELECTED ASSOCIATION, AN ARIZONA NON-PROFIT CORPORATION, ACKNOWLEDGE THE RESPONSIBILITIES DEDICATED HEREIN.

NAME: *Wild Tree*
DATE: 2/4/94

NOTES:

- CONSTRUCTION WITHIN UTILITY EASEMENTS SHALL BE LIMITED TO UTILITIES, AND WOOD, WIRE OR REMOVABLE SECTION TYPE FENCING AND DRIVEWAYS.
- NO STRUCTURES OR ANY KIND THAT REQUIRE EASEMENTS WHICH WOULD IMPERE THE FLOW OF WATER THROUGH THE EASEMENTS.

ACKNOWLEDGEMENT: STATE OF ARIZONA COUNTY OF MARICOPA

ON THIS, THE 4th DAY OF February, 1994, BEFORE ME, PERSONALLY APPEARED, _____ BEING OF SOUND MIND AND SOUND MEMORY, I HEREBY SET MY HAND AND OFFICIAL SEAL.

MY COMMISSION EXPIRES: 2/12/95 NOTARY PUBLIC: *Catherine Hartin*

ACKNOWLEDGEMENT: STATE OF ARIZONA COUNTY OF MARICOPA

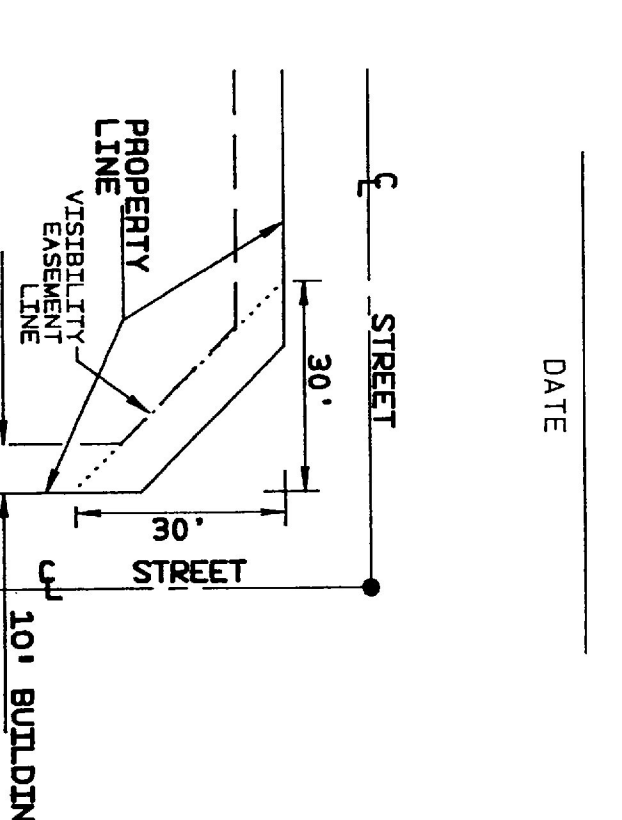
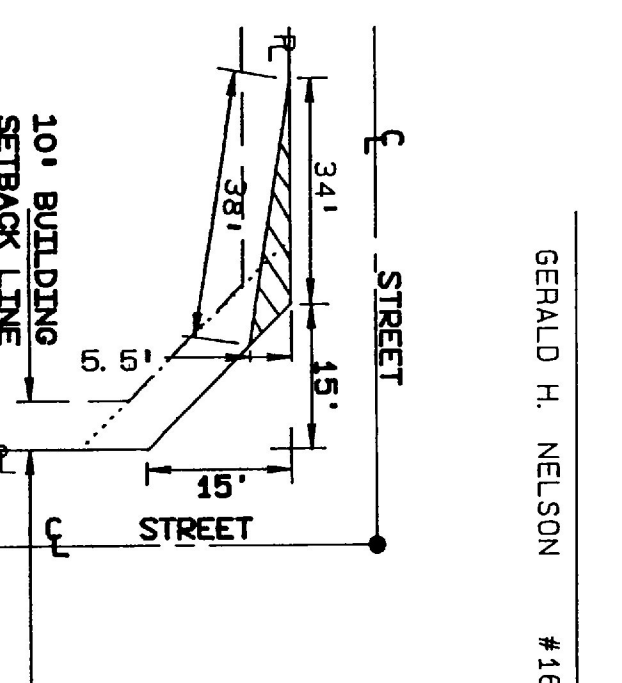
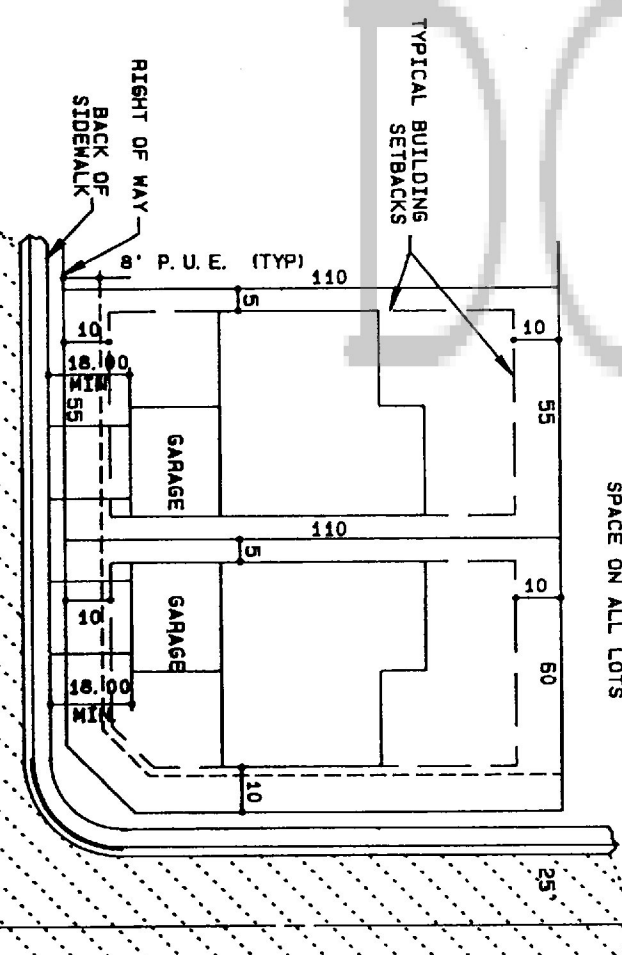
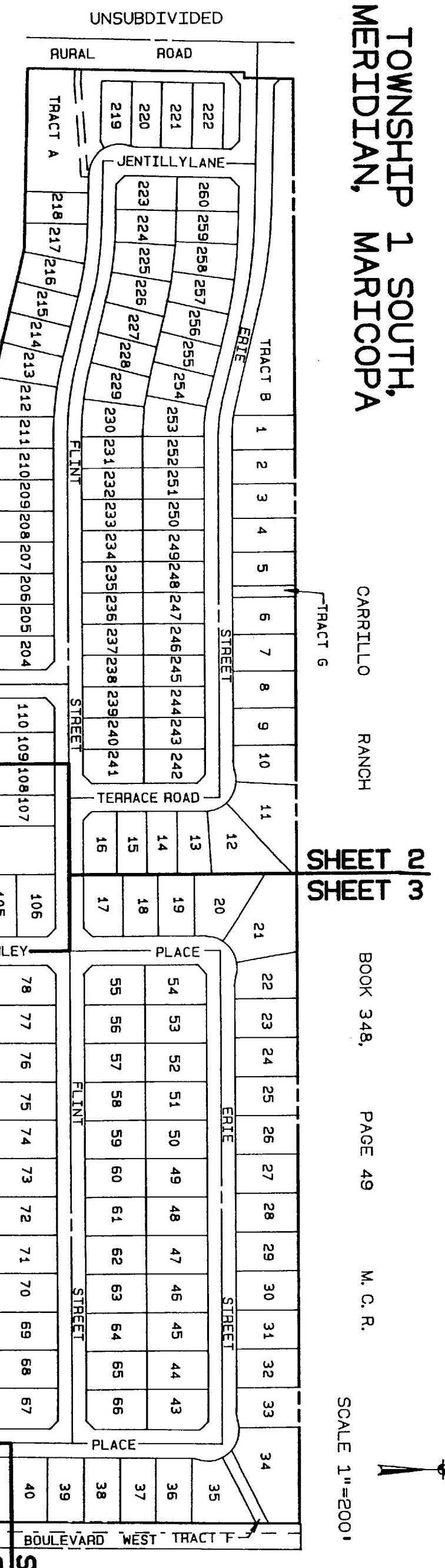
ON THIS, THE 4th DAY OF February, 1994, BEFORE ME, PERSONALLY APPEARED, _____ BEING OF SOUND MIND AND SOUND MEMORY, I HEREBY SET MY HAND AND OFFICIAL SEAL.

MY COMMISSION EXPIRES: 2/12/95 NOTARY PUBLIC: *Catherine Hartin*

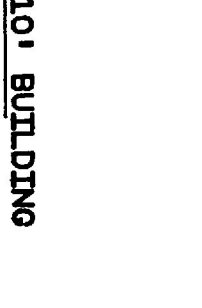
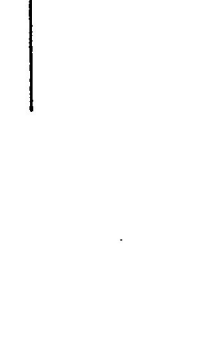
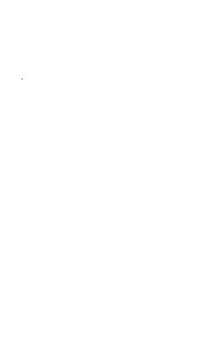
ACKNOWLEDGEMENT: STATE OF ARIZONA COUNTY OF MARICOPA

ON THIS, THE 4th DAY OF February, 1994, BEFORE ME, PERSONALLY APPEARED, _____ BEING OF SOUND MIND AND SOUND MEMORY, I HEREBY SET MY HAND AND OFFICIAL SEAL.

MY COMMISSION EXPIRES: 2/12/95 NOTARY PUBLIC: *Catherine Hartin*



- TRACT AREAS**
- | | |
|---------|----------|
| TRACT A | 0.79 AC. |
| TRACT B | 1.79 AC. |
| TRACT C | 1.83 AC. |
| TRACT D | 2.83 AC. |
| TRACT E | 0.05 AC. |
| TRACT F | 0.05 AC. |
| TRACT G | 0.05 AC. |
- GROSS AREA: 56.70 AC.**
NET AREA: 56.61 AC.



APPROVALS:

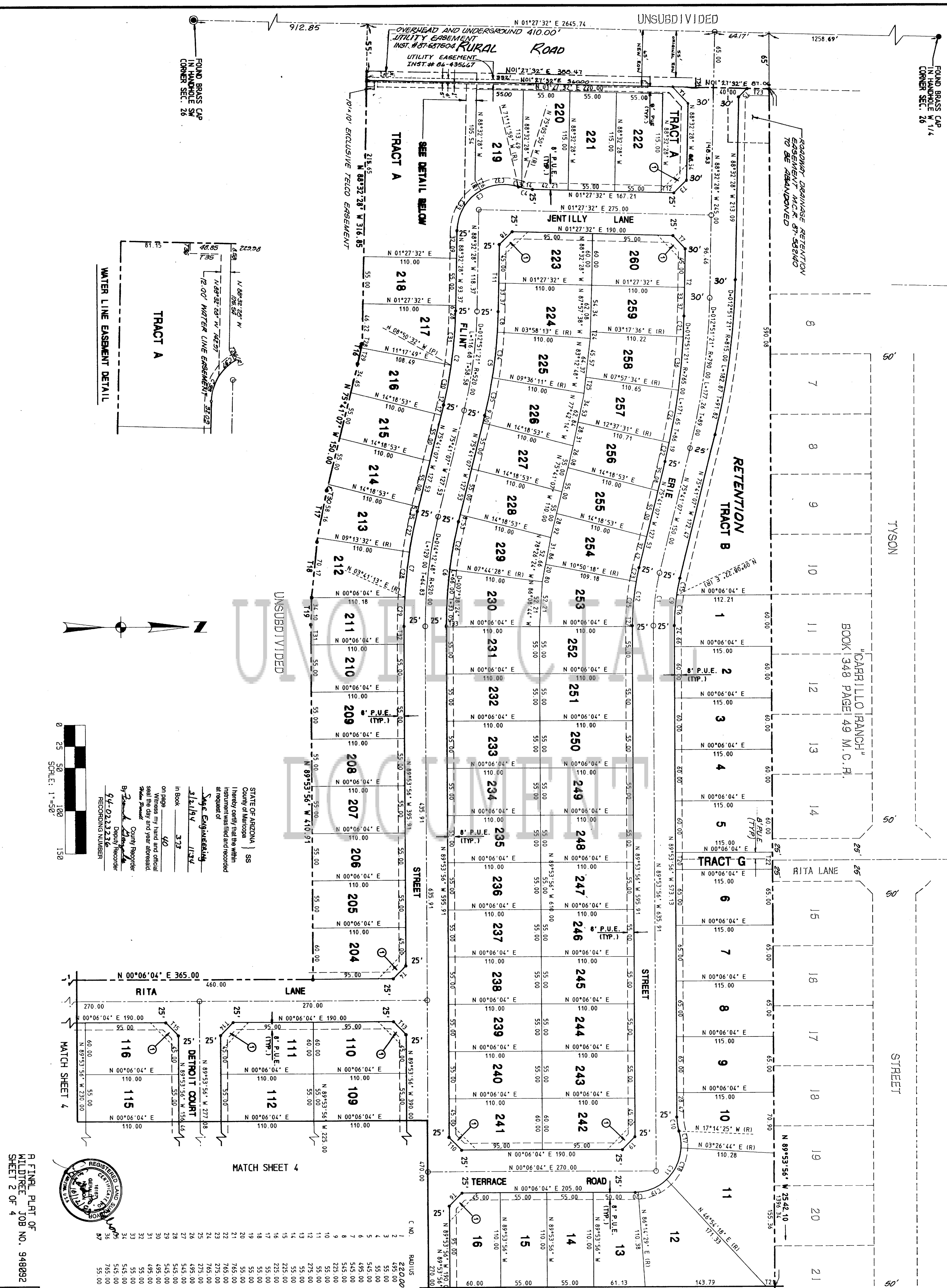
APPROVED BY: *Angela Tom* DATE: 2/1/94

APPROVED BY: *Scott J. Williams* DATE: 2/1/94

APPROVED BY: *Germain H. Ball* DATE: 2/1/94

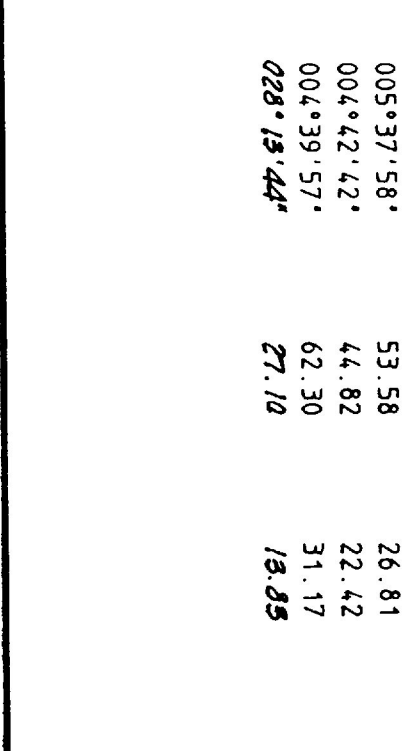
APPROVED BY: *Gerald H. Nelson* DATE: 2/1/94

A FINAL PLAT OF WILD TREE SHEET 1 OF 4 SEC. JOB NO. 948092
Scott J. Williams
Professional Engineer, State 8
10020 Blvd - 4971



C.N.O.	RADIUS	DELTA	LENGTH	TANGENT
1	220.00	01°42'44"	62.02	91.17
2	495.00	01°51'21"	111.07	52.77
3	55.00	107°20'29"	103.04	74.79
4	55.00	01°25'12"	16.85	8.39
5	545.00	01°25'12"	122.29	61.40
6	495.00	01°42'44"	122.80	61.71
7	545.00	01°42'44"	135.20	67.95
8	545.00	00°23'04"	23.89	11.95
9	225.00	01°42'44"	55.82	28.05
10	55.00	01°42'44"	16.85	8.39
11	55.00	01°42'44"	103.04	74.79
12	275.00	01°42'44"	68.22	34.29
13	55.00	00°34'53"	3.74	1.87
14	55.00	00°34'53"	12.91	6.48
15	55.00	00°10'31"	26.32	10.17
16	225.00	00°02'17"	35.49	17.78
17	225.00	02°04'09"	19.86	10.04
18	55.00	04°32'27"	41.72	21.92
19	55.00	03°20'11"	37.76	19.66
20	55.00	00°51'35"	3.71	1.85
21	765.00	00°14'22"	26.49	12.25
22	765.00	00°14'22"	22.56	11.28
23	275.00	00°32'28"	16.89	8.35
24	765.00	00°43'39"	62.30	25.84
25	100.00	01°04'14"	51.53	25.84
26	495.00	00°53'25"	56.79	28.43
27	543.00	00°53'25"	48.41	24.22
28	543.00	00°53'25"	52.68	26.30
29	543.00	00°53'25"	54.11	26.30
30	495.00	00°53'25"	47.28	23.66
31	495.00	00°53'25"	43.91	21.94
32	55.00	04°49'19"	45.91	24.39
33	55.00	02°14'18"	29.90	15.38
34	545.00	00°53'25"	53.58	26.81
35	545.00	00°42'42"	44.82	22.42
36	545.00	00°42'42"	44.82	22.42
37	55.00	00°42'42"	27.10	13.85

R FINAL PLAT OF
MILDTRE JOB NO. 948892
SHEET 2 OF 4



STATE OF ARIZONA | SS
County of Maricopa
I hereby certify that the within
instrument was filed and recorded
at request of
Sage Engineering
Shelby 11374
In Book 372
on page 40
Witness my hand and official
seal the day and year addressed.
County Recorder
By *[Signature]* Deputy Recorder
94-0223236
RECORDING NUMBER

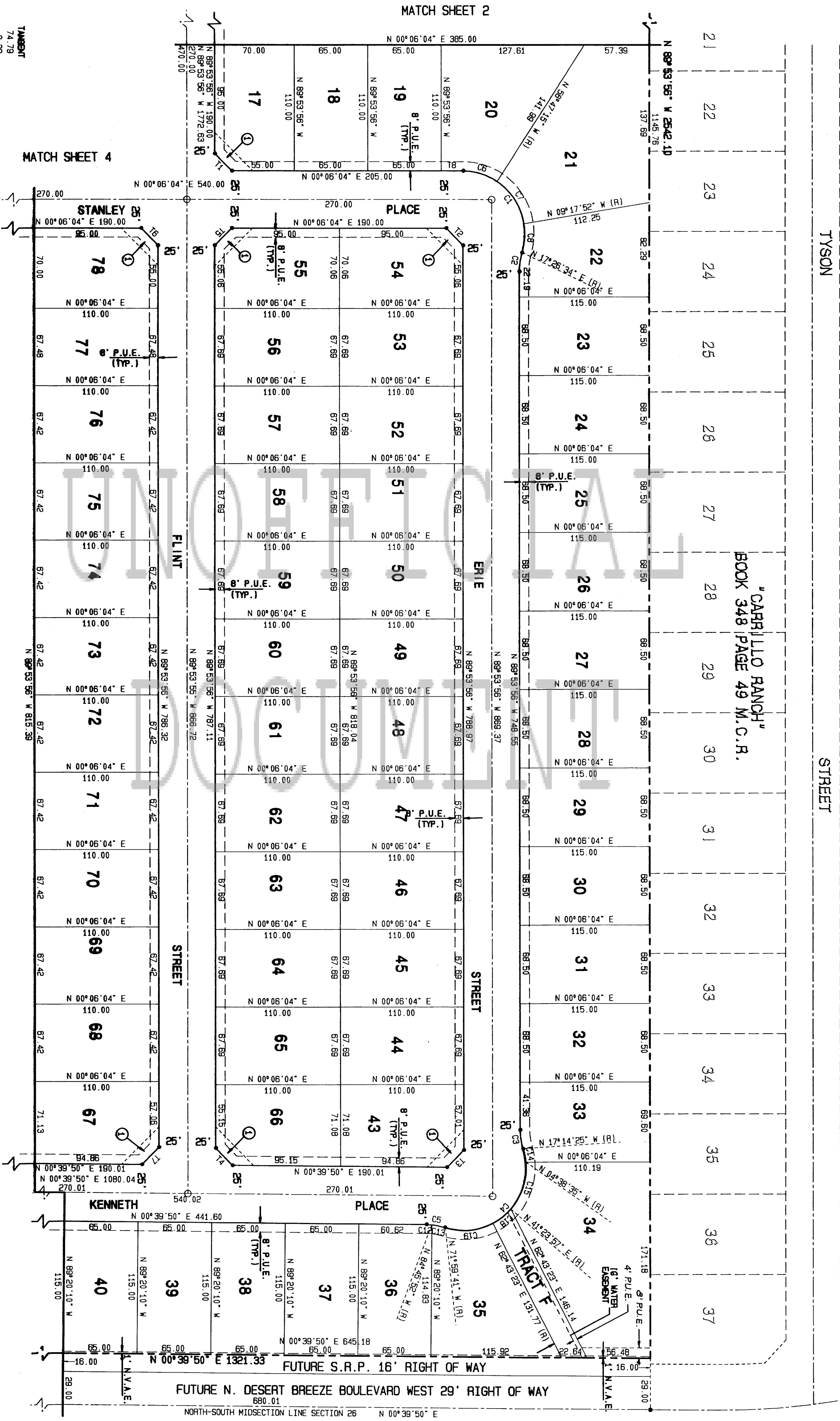
373-40

MATCH SHEET 3

MATCH SHEET 4

MATCH SHEET 4

UNSUBDIVIDED



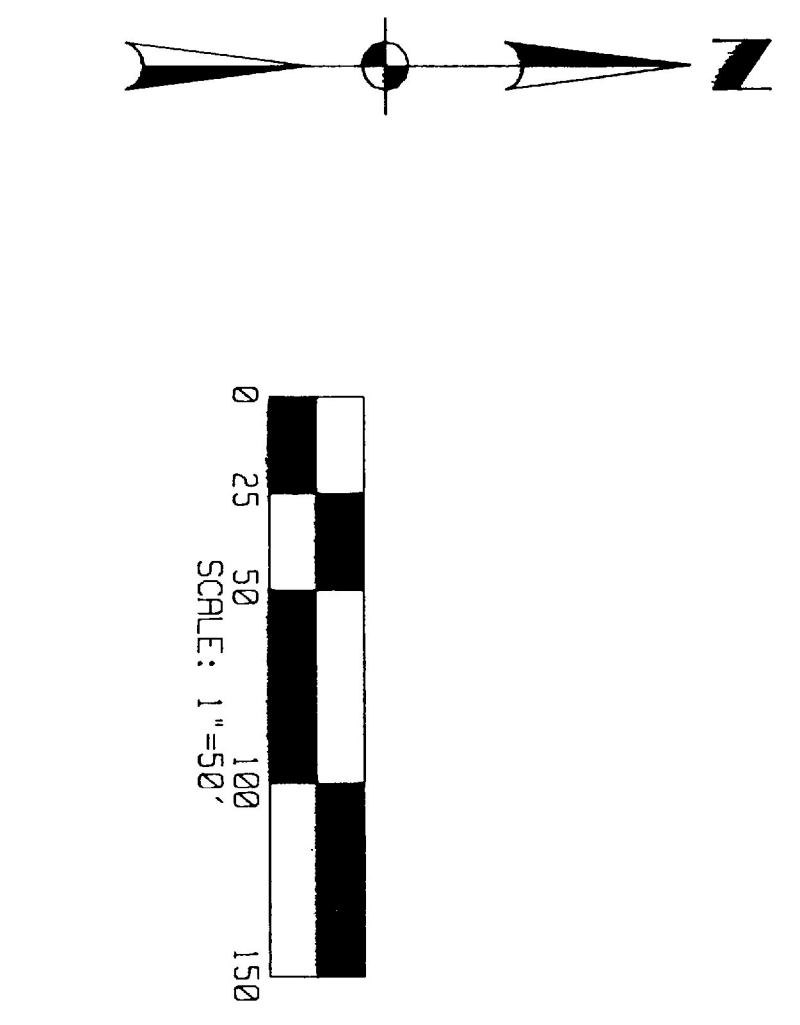
LINE TABLE

T. NO.	DIRECTION	DISTANCE
1	S 45° 06' 04" W	21.21
2	S 45° 06' 04" W	21.21
3	S 44° 37' 03" E	21.32
4	S 45° 22' 57" W	21.11
5	N 44° 53' 56" W	21.21
6	N 45° 03' 04" E	21.21
7	S 44° 37' 03" E	21.32
8	N 00° 06' 04" E	20.00
9	S 89° 53' 56" E	21.93

CURVE TABLE

C. NO.	RADIUS	DELTA	LENGTH	TANGENT
1	55.00	107° 20' 28"	103.04	74.79
2	55.00	017° 20' 28"	18.85	8.39
3	55.00	017° 20' 28"	18.85	8.39
4	55.00	125° 14' 44"	120.23	106.21
5	55.00	017° 20' 30"	16.85	8.39
6	55.00	033° 06' 41"	31.78	16.36
7	55.00	047° 29' 22"	45.59	24.19
8	55.00	028° 44' 26"	25.67	13.07
9	55.00	028° 27' 59"	28.29	14.48
10	55.00	049° 45' 49"	44.17	23.36
11	55.00	049° 00' 56"	44.17	23.36
12	55.00	004° 34' 19"	4.39	2.20
13	55.00	012° 46' 11"	12.26	6.15
14	55.00	012° 36' 50"	12.26	6.07
15	55.00	048° 02' 22"	44.20	23.37
16	55.00	020° 57' 05"	20.11	10.17
17	55.00	048° 21' 32"	43.95	22.99
18	55.00	021° 19' 25"	20.47	10.35
19	55.00	045° 16' 56"	43.47	22.94

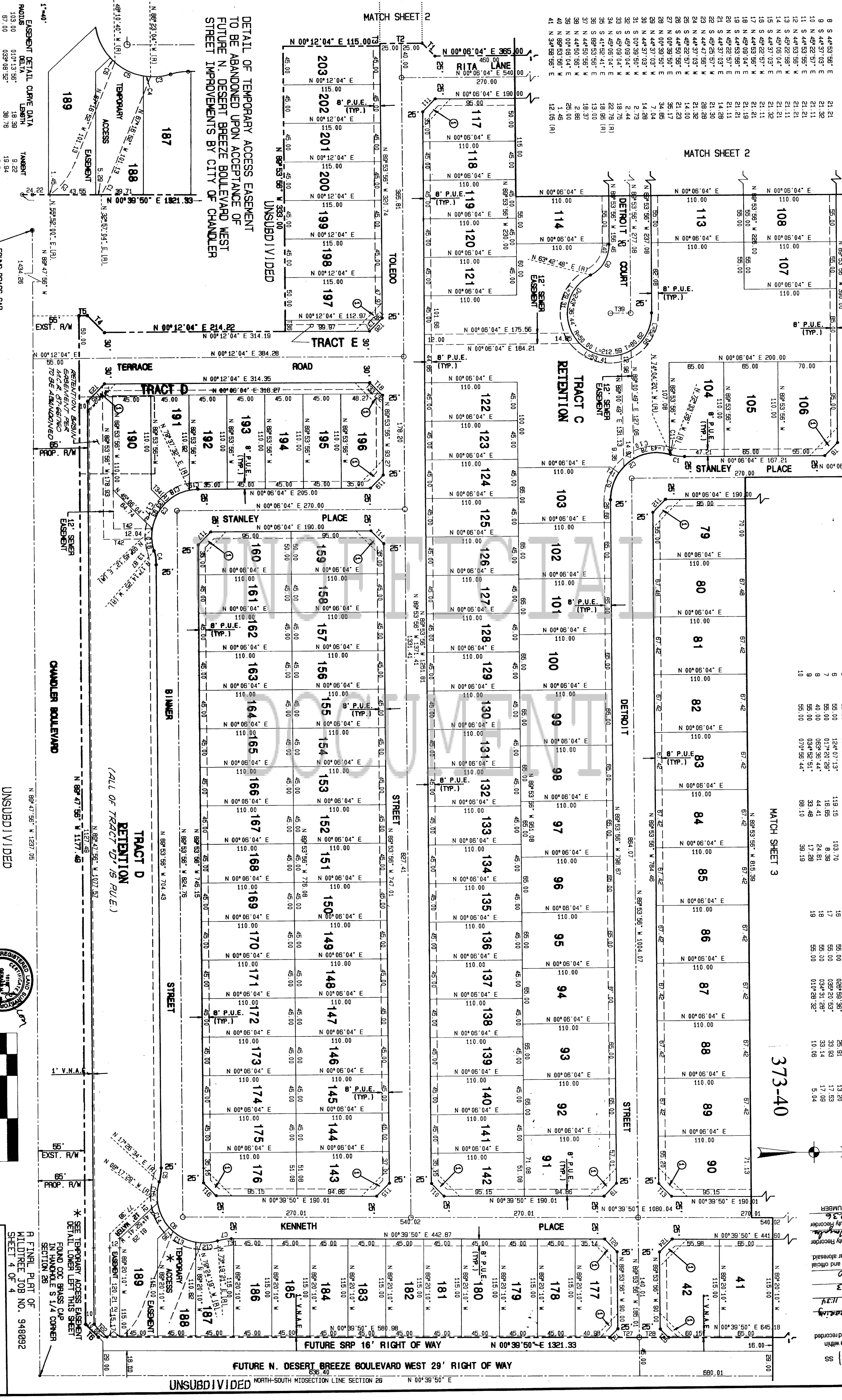
STATE OF ARIZONA) SS
 County of Maricopa)
 I hereby certify that the within
 instrument was filed and recorded
 at request of
Sage Engineering
 3121/19
 11/34
 In Book 373
 on page 40
 Witness my hand and official
 seal the day and year aforesaid.
 County Recorder
 By *[Signature]*
 Deputy Recorder
 94-0123-113
 RECORDING NUMBER



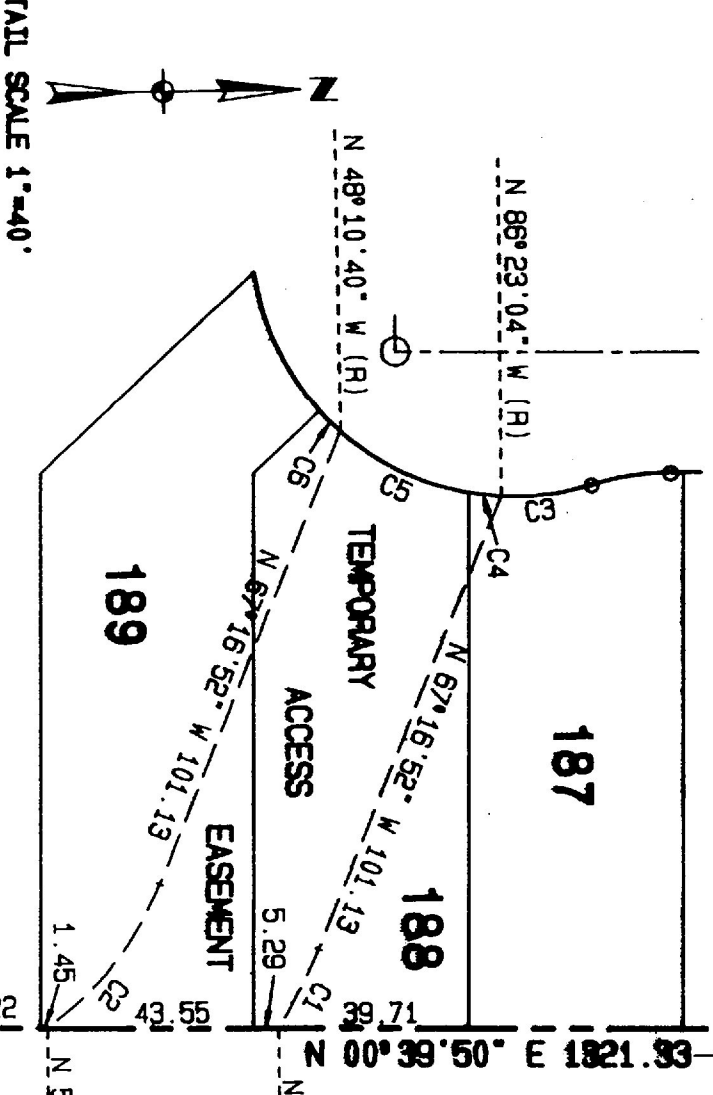
FINAL PLAT OF
 WILD TREE
 JOB NO. 948092
 SHEET 3 OF 4

Sage engineering corporation
 1882-1884-1886-1888-1890
 (602) 258-3971

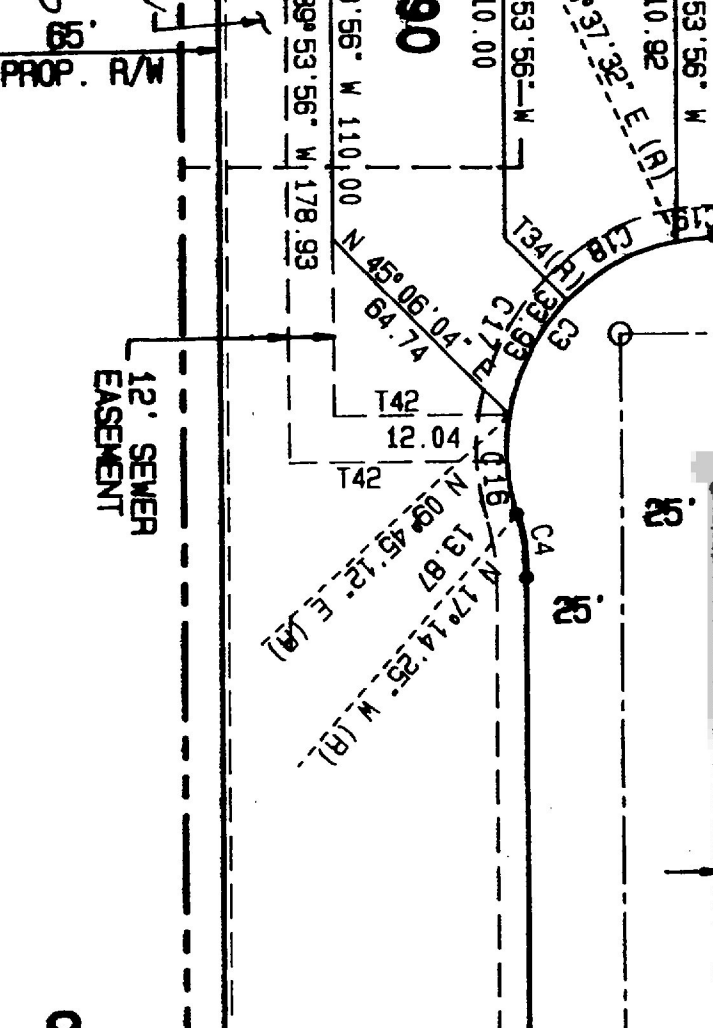
LINE TABLE		LINE TABLE CONT'D		CURVE TABLE		CURVE TABLE	
T. NO.	DIRECTION	T. NO.	DIRECTION	C. NO.	RADIUS	C. NO.	RADIUS
1	N 45° 06' 04" E	1	N 00° 06' 04" E	1	55.00	11	55.00
2	N 00° 06' 04" E	2	N 00° 06' 04" W	2	55.00	12	55.00
3	N 89° 53' 56" W	3	N 00° 06' 04" W	3	55.00	13	55.00
4	N 00° 12' 04" E	4	N 44° 47' 56" W	4	55.00	14	55.00
5	N 00° 12' 04" E	5	N 44° 47' 56" W	5	55.00	15	55.00
6	S 45° 25' 57" W	6	N 44° 47' 56" W	6	55.00	16	55.00
7	S 45° 25' 57" W	7	N 44° 47' 56" W	7	55.00	17	55.00
8	S 44° 53' 56" E	8	N 44° 47' 56" W	8	55.00	18	55.00
9	S 44° 53' 56" E	9	N 44° 47' 56" W	9	55.00	19	55.00
10	N 45° 22' 57" E	10	N 44° 47' 56" W	10	55.00	20	55.00
11	N 44° 53' 56" E	11	N 44° 47' 56" W	11	55.00	21	55.00
12	N 44° 53' 56" E	12	N 44° 47' 56" W	12	55.00	22	55.00
13	S 45° 22' 56" W	13	N 44° 47' 56" W	13	55.00	23	55.00
14	N 45° 06' 04" E	14	N 44° 47' 56" W	14	55.00	24	55.00
15	S 44° 47' 03" E	15	N 44° 47' 56" W	15	55.00	25	55.00
16	S 44° 47' 03" E	16	N 44° 47' 56" W	16	55.00	26	55.00
17	S 45° 22' 57" W	17	N 44° 47' 56" W	17	55.00	27	55.00
18	N 44° 53' 56" E	18	N 44° 47' 56" W	18	55.00	28	55.00
19	S 44° 53' 56" E	19	N 44° 47' 56" W	19	55.00	29	55.00
20	N 45° 22' 57" E	20	N 44° 47' 56" W	20	55.00	30	55.00
21	N 44° 53' 56" E	21	N 44° 47' 56" W	21	55.00	31	55.00
22	S 44° 47' 03" E	22	N 44° 47' 56" W	22	55.00	32	55.00
23	N 44° 47' 03" E	23	N 44° 47' 56" W	23	55.00	33	55.00
24	N 44° 47' 03" E	24	N 44° 47' 56" W	24	55.00	34	55.00
25	S 45° 22' 57" W	25	N 44° 47' 56" W	25	55.00	35	55.00
26	S 44° 50' 56" E	26	N 44° 47' 56" W	26	55.00	36	55.00
27	N 00° 39' 56" E	27	N 44° 47' 56" W	27	55.00	37	55.00
28	N 00° 39' 56" E	28	N 44° 47' 56" W	28	55.00	38	55.00
29	N 44° 37' 03" W	29	N 44° 47' 56" W	29	55.00	39	55.00
30	N 44° 37' 03" W	30	N 44° 47' 56" W	30	55.00	40	55.00
31	S 45° 09' 04" W	31	N 44° 47' 56" W	31	55.00	41	55.00
32	S 45° 09' 04" W	32	N 44° 47' 56" W	32	55.00	42	55.00
33	S 45° 09' 04" W	33	N 44° 47' 56" W	33	55.00	43	55.00
34	N 45° 06' 04" E	34	N 44° 47' 56" W	34	55.00	44	55.00
35	S 44° 52' 41" E	35	N 44° 47' 56" W	35	55.00	45	55.00
36	S 89° 53' 56" E	36	N 44° 47' 56" W	36	55.00	46	55.00
37	N 44° 50' 56" E	37	N 44° 47' 56" W	37	55.00	47	55.00
38	N 44° 50' 56" E	38	N 44° 47' 56" W	38	55.00	48	55.00
39	N 00° 06' 04" E	39	N 44° 47' 56" W	39	55.00	49	55.00
40	N 89° 53' 56" E	40	N 44° 47' 56" W	40	55.00	50	55.00



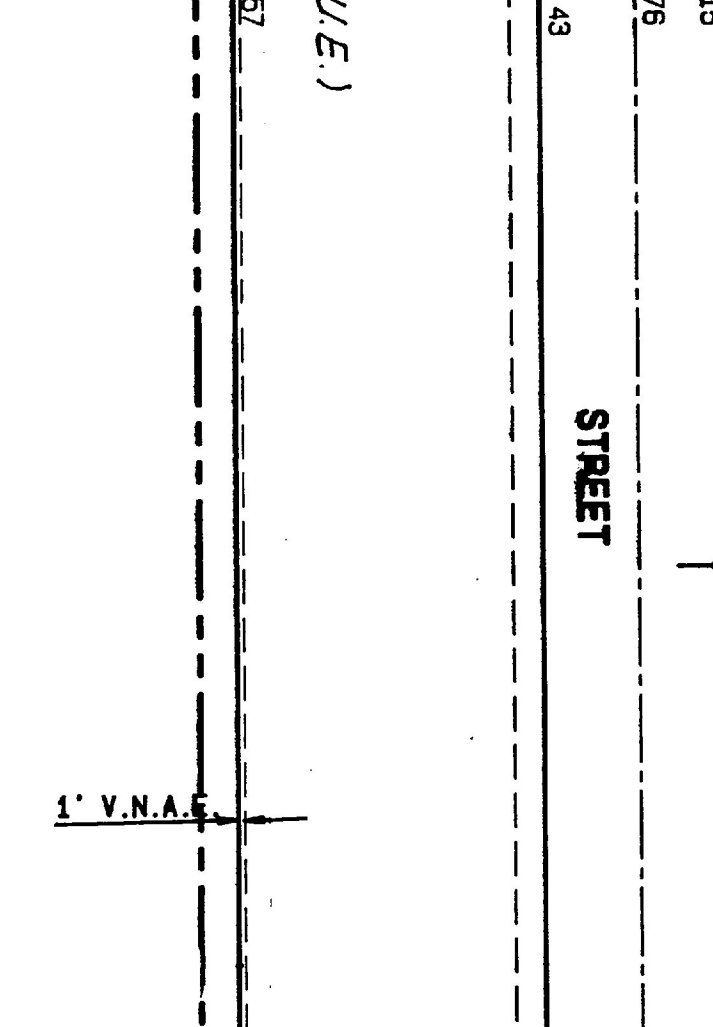
DETAIL OF TEMPORARY ACCESS EASEMENT TO BE ABANDONED UPON ACCEPTANCE OF FUTURE N. DESERT BREEZE BOULEVARD WEST STREET IMPROVEMENTS BY CITY OF CHANDLER



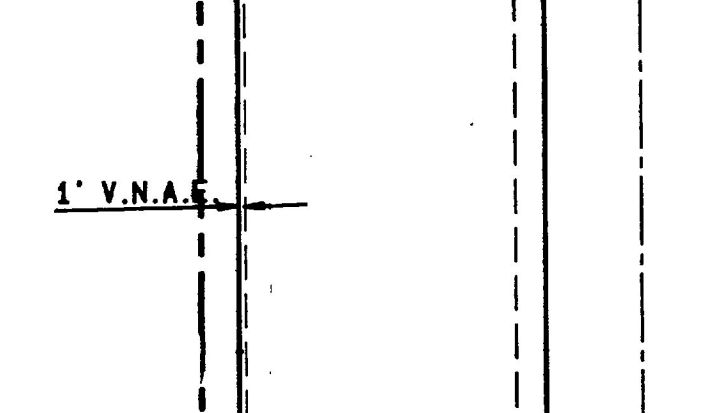
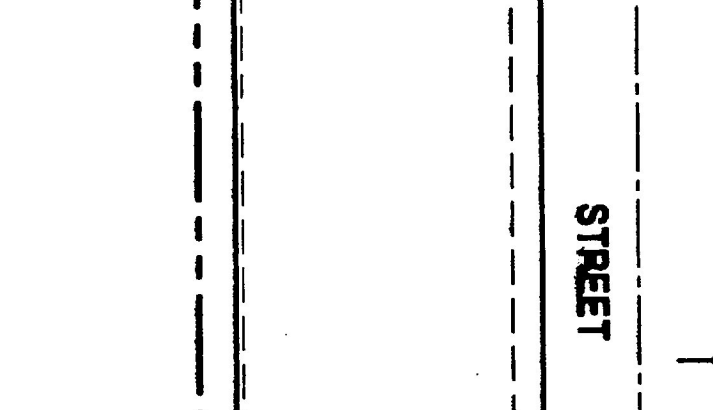
C. NO.	RADIUS	DELTA	TANGENT
1	103.00	01° 13' 56"	18.39
2	103.00	03° 08' 52"	19.76
3	55.00	03° 15' 56"	9.84
4	55.00	06° 59' 45"	6.70
5	55.00	03° 13' 56"	28.98
6	55.00	00° 17' 56"	6.06



C. NO.	RADIUS	DELTA	TANGENT
1	103.00	01° 13' 56"	18.39
2	103.00	03° 08' 52"	19.76
3	55.00	03° 15' 56"	9.84
4	55.00	06° 59' 45"	6.70
5	55.00	03° 13' 56"	28.98
6	55.00	00° 17' 56"	6.06



A FINER PLAT OF MIDDLEBURY JOB NO. 948092 SHEET 4 OF 4
 SEE TEMPORARY ACCESS EASEMENT FOUND IN LOWER LEFT CORNER OF THIS SHEET
 SEE TEMPORARY ACCESS EASEMENT FOUND IN HANDBOOK S 1/4 CORNER SECTION 26



UNSUBDIVIDED
 NORTH-SOUTH MIDSECTION LINE SECTION 26
 FUTURE N. DESERT BREEZE BOULEVARD WEST 29' RIGHT OF WAY
 FUTURE SRP 16' RIGHT OF WAY