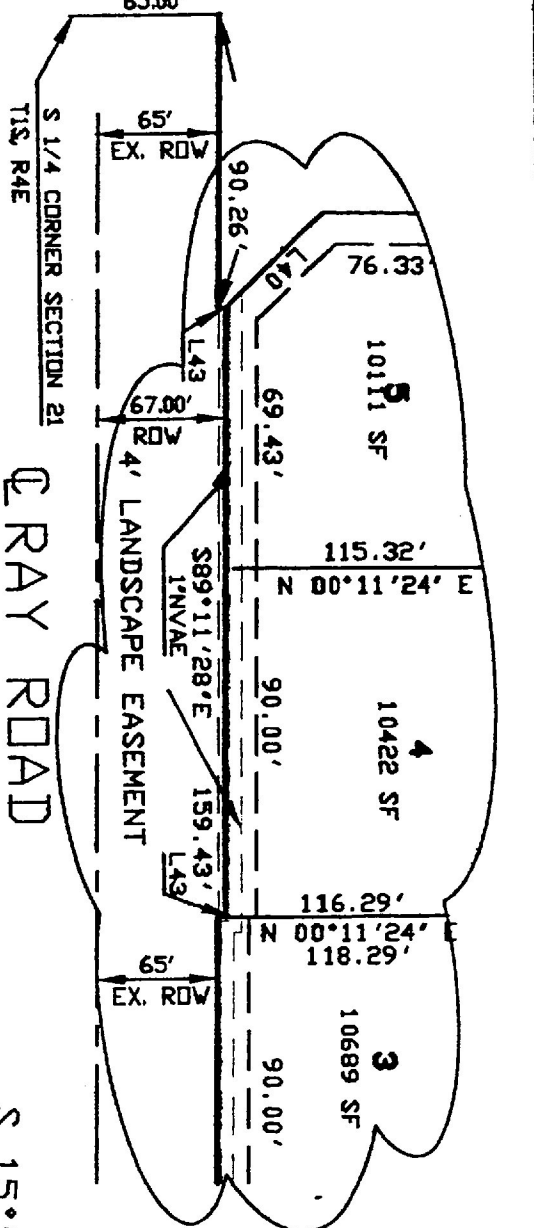


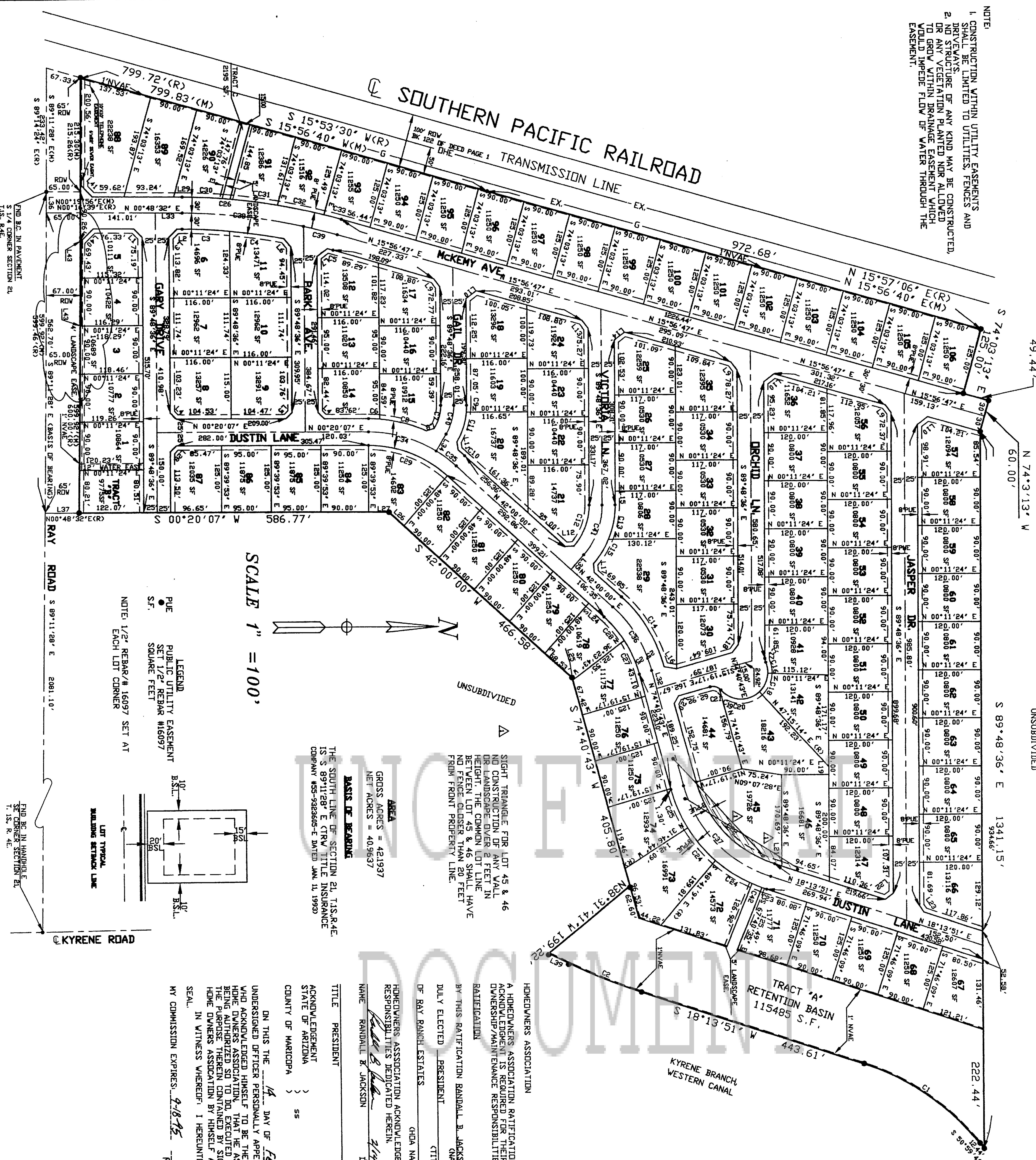
RAY RANCH ESTATES PHASE I

372-50

A PORTION OF THE SOUTH HALF OF SEC. 21, T. 1 S., R. 4 E., OF THE G. & S.R.B. & M., MARICOPA COUNTY, ARIZONA



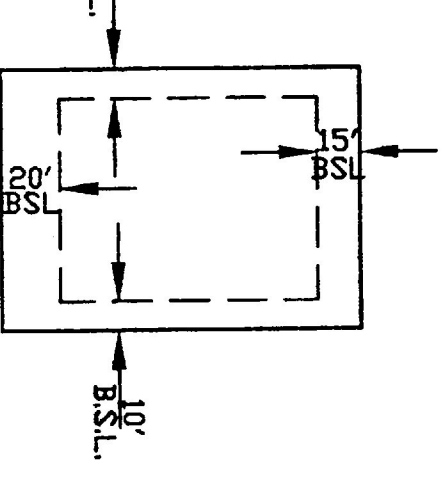
NOTE:
 1. CONSTRUCTION WITHIN UTILITY EASEMENTS AND DRIVEWAYS IS LIMITED TO UTILITIES, FENCES AND DR. NO STRUCTURE OF ANY KIND MAY BE CONSTRUCTED, OR ANY VEGETATION PLANTED NOR ALLOWED TO GROW WITHIN DRAINAGE EASEMENT WHICH WOULD IMPERE FLOW OF WATER THROUGH THE EASEMENT.



SCALE 1" = 100'

LEGEND
 PUBLIC UTILITY EASEMENT
 SET 1/2" REBAR #16097
 SQUARE FEET

NOTE: 1/2" REBAR #16097 SET AT EACH LOT CORNER



UNSUBDIVIDED
 AREA
 GROSS ACRES = 421.937
 NET ACRES = 405.937
 THE SOUTH LINE OF SECTION 21, T.1S., R.4E., IS S 89°11'28" E C161.10' 2081.10'
 COMPANY #85-3232605-D DATED JAN. 11, 1993

RETENTION BASIN
 115485 S.F.
 443.61'

TRACT 'A'
 115485 S.F.

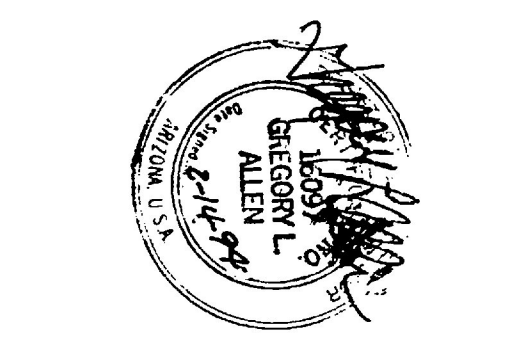
UNSUBDIVIDED

CURVE DATA:

Curve Number	Delta	Radius	Area	Tangent Length
C1	32.45	470.00	258.76	139.17
C2	71.40	118.00	45.35	22.75
C3	5.26	1098.89	104.47	52.28
C4	0.34	1098.89	104.47	52.28
C5	0.34	1098.89	104.47	52.28
C6	0.34	1098.89	104.47	52.28
C7	0.34	1098.89	104.47	52.28
C8	0.34	1098.89	104.47	52.28
C9	0.34	1098.89	104.47	52.28
C10	0.34	1098.89	104.47	52.28
C11	0.34	1098.89	104.47	52.28
C12	0.34	1098.89	104.47	52.28
C13	0.34	1098.89	104.47	52.28
C14	0.34	1098.89	104.47	52.28
C15	0.34	1098.89	104.47	52.28
C16	0.34	1098.89	104.47	52.28
C17	0.34	1098.89	104.47	52.28
C18	0.34	1098.89	104.47	52.28
C19	0.34	1098.89	104.47	52.28
C20	0.34	1098.89	104.47	52.28
C21	0.34	1098.89	104.47	52.28
C22	0.34	1098.89	104.47	52.28
C23	0.34	1098.89	104.47	52.28
C24	0.34	1098.89	104.47	52.28
C25	0.34	1098.89	104.47	52.28
C26	0.34	1098.89	104.47	52.28
C27	0.34	1098.89	104.47	52.28
C28	0.34	1098.89	104.47	52.28
C29	0.34	1098.89	104.47	52.28
C30	0.34	1098.89	104.47	52.28
C31	0.34	1098.89	104.47	52.28
C32	0.34	1098.89	104.47	52.28
C33	0.34	1098.89	104.47	52.28
C34	0.34	1098.89	104.47	52.28
C35	0.34	1098.89	104.47	52.28
C36	0.34	1098.89	104.47	52.28
C37	0.34	1098.89	104.47	52.28
C38	0.34	1098.89	104.47	52.28
C39	0.34	1098.89	104.47	52.28
C40	0.34	1098.89	104.47	52.28
C41	0.34	1098.89	104.47	52.28
C42	0.34	1098.89	104.47	52.28

LINE DATA:

Line Number	Bearing	Distance	Tangent Length
L1	N 45°20'58" E	28.04	13.75
L2	N 45°20'58" E	10.04	4.95
L3	N 45°20'58" E	21.80	10.75
L4	N 45°20'58" E	16.84	8.25
L5	N 45°20'58" E	15.76	7.75
L6	N 45°20'58" E	19.76	9.75
L7	N 45°20'58" E	14.99	7.25
L8	N 45°20'58" E	14.99	7.25
L9	N 45°20'58" E	14.99	7.25
L10	N 45°20'58" E	14.99	7.25
L11	N 45°20'58" E	14.99	7.25
L12	N 45°20'58" E	14.99	7.25
L13	N 45°20'58" E	14.99	7.25
L14	N 45°20'58" E	14.99	7.25
L15	N 45°20'58" E	14.99	7.25
L16	N 45°20'58" E	14.99	7.25
L17	N 45°20'58" E	14.99	7.25
L18	N 45°20'58" E	14.99	7.25
L19	N 45°20'58" E	14.99	7.25
L20	N 45°20'58" E	14.99	7.25
L21	N 45°20'58" E	14.99	7.25
L22	N 45°20'58" E	14.99	7.25
L23	N 45°20'58" E	14.99	7.25
L24	N 45°20'58" E	14.99	7.25
L25	N 45°20'58" E	14.99	7.25
L26	N 45°20'58" E	14.99	7.25
L27	N 45°20'58" E	14.99	7.25
L28	N 45°20'58" E	14.99	7.25
L29	N 45°20'58" E	14.99	7.25
L30	N 45°20'58" E	14.99	7.25
L31	N 45°20'58" E	14.99	7.25
L32	N 45°20'58" E	14.99	7.25
L33	N 45°20'58" E	14.99	7.25
L34	N 45°20'58" E	14.99	7.25
L35	N 45°20'58" E	14.99	7.25
L36	N 45°20'58" E	14.99	7.25
L37	N 45°20'58" E	14.99	7.25
L38	N 45°20'58" E	14.99	7.25
L39	N 45°20'58" E	14.99	7.25
L40	N 45°20'58" E	14.99	7.25
L41	N 45°20'58" E	14.99	7.25
L42	N 45°20'58" E	14.99	7.25
L43	N 45°20'58" E	14.99	7.25



STATE OF ARIZONA
 County of Maricopa
 I hereby certify that the within instrument was filed and recorded at the office of the Registrar of Deeds for Maricopa County, Arizona, on this 14th day of February, 1994, at 3:36 PM.
 My Commission Expires: 2-14-94
 Gregory L. Allen
 Registrar of Deeds

ON THIS 14th DAY OF FEBRUARY, 1994, BEFORE ME, THE UNDERSIGNED OFFICER PERSONALLY APPEARED **RANDALL B. JACKSON** AND **RAJIV K. JAIN** WHO ACKNOWLEDGED THEMSELVES TO BE THE PRESIDENT AND VICE PRESIDENT OF RAY RANCH ESTATES PHASE I, INC. A CORPORATION ORGANIZED UNDER THE LAWS OF THE STATE OF ARIZONA. THE PURPOSE OF THE FOREGOING INSTRUMENT WAS TO SUBDIVIDE THE LAND CONTAINED HEREIN INTO LOTS AND TRACTS FOR THE PURPOSE OF DEVELOPING AND SELLING THE SAME. I HEREBY SET FORTH MY HAND AND OFFICIAL SEAL IN WITNESS WHEREOF, I HERETO SET FORTH MY HAND AND OFFICIAL SEAL, MY COMMISSION EXPIRES: 2-14-94.

ATTEST: **Gregory L. Allen**
 REGISTRAR OF DEEDS

THIS IS TO CERTIFY THAT ALL ENGINEERS AND SURVEYORS WHOSE NAMES ARE LISTED ON THIS INSTRUMENT HAVE BEEN COMPETENT WITH AND THAT THE INSTRUMENT IS COMPLETE AS SHOWN. THE AREA DESIGNATED AS HAVING AN ASSURED WATER SUPPLY PURSUANT TO SECTION 45-576 ARIZONA REVISED STATUTES.

THIS IS TO CERTIFY THAT THIS PLAT IS CORRECT AND ACCURATE AND THAT THE INSTRUMENTS SHOWN HEREON HAVE BEEN SET OR LOCATED AS DESCRIBED TO THE BEST OF MY KNOWLEDGE AND BELIEF.

DATE: 2-14-94

THIS IS TO CERTIFY THAT THE SURVEY AND SUBDIVISION OF THE PREMISES DESCRIBED HEREON WAS MADE IN ACCORDANCE WITH THE LAWS OF THE STATE OF ARIZONA AND THAT THE MONUMENTS SHOWN ACTUALLY EXIST OR WILL BE SET AS SHOWN AND THAT THEIR POSITIONS ARE CORRECTLY SHOWN, AND THAT SAID MONUMENTS ARE SUFFICIENT TO ENABLE THE SURVEY TO BE RETRACED.

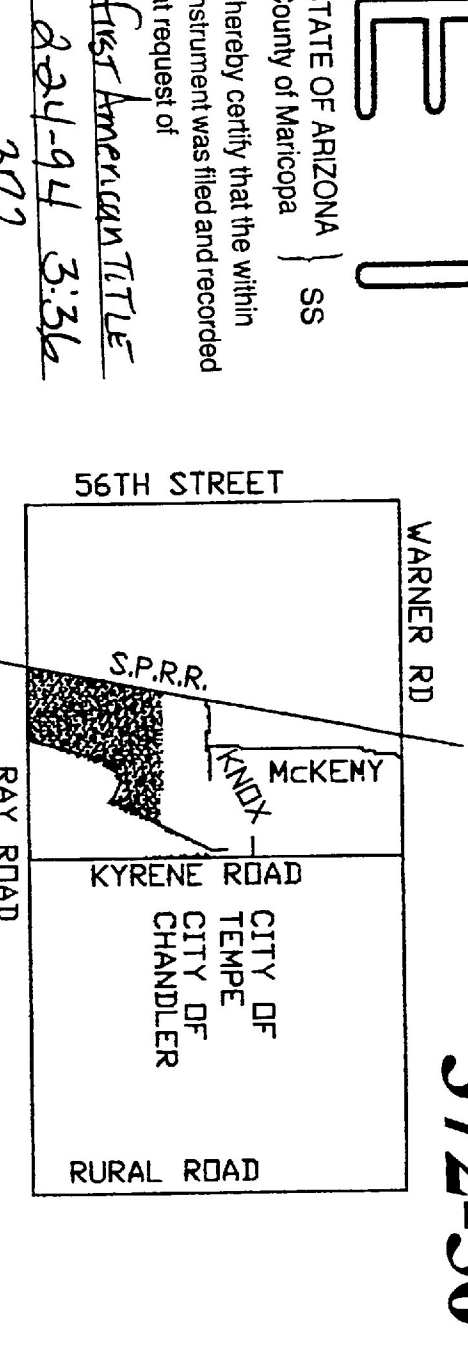
REGISTERED LAND SURVEYOR (#16097)
 DATE: 2-14-94

IN WITNESS WHEREOF, JACKSON PROPERTIES REE, INC., AN ARIZONA CORPORATION, AS OWNER, HAS HERETO CAUSED ITS CORPORATE NAME TO BE PRINTED AND THE SAME TO BE ATTESTED BY THE SIGNATURE OF ITS PRESIDENT AND THE SAME TO BE ATTESTED BY THE SIGNATURE OF ITS DOME AS THEEMING, MARICOPA COUNTY, ARIZONA, THIS 14th DAY OF FEBRUARY, 1994.

BY: **Gregory L. Allen**
 REGISTRAR OF DEEDS

ACKNOWLEDGEMENT
 STATE OF ARIZONA)
 MARICOPA COUNTY)
 ON THIS 14th DAY OF FEBRUARY, 1994, BEFORE ME, THE UNDERSIGNED OFFICER PERSONALLY APPEARED **RANDALL B. JACKSON** WHO ACKNOWLEDGED HIMSELF TO BE THE PRESIDENT OF JACKSON PROPERTIES REE, INC., A CORPORATION ORGANIZED UNDER THE LAWS OF THE STATE OF ARIZONA. THE PURPOSE OF THE FOREGOING INSTRUMENT WAS TO SUBDIVIDE THE LAND CONTAINED HEREIN INTO LOTS AND TRACTS FOR THE PURPOSE OF DEVELOPING AND SELLING THE SAME. I HEREBY SET FORTH MY HAND AND OFFICIAL SEAL IN WITNESS WHEREOF, I HERETO SET FORTH MY HAND AND OFFICIAL SEAL, MY COMMISSION EXPIRES: 2-14-94.

ATTEST: **Gregory L. Allen**
 REGISTRAR OF DEEDS



JOB NUMBER: 90374
 DRAWING #: FINAL-1
 SHEET: 1 OF 1
 DATE: 02-02-94

ALLEN CONSULTING ENGINEERS, INC.
 266 WEST 3RD PLACE
 MESA, ARIZONA 85201
 PHONE (602) 844-1066

RAY RANCH ESTATES PHASE I
 JACKSON PROPERTIES REE, INC.
 FINAL PLAT