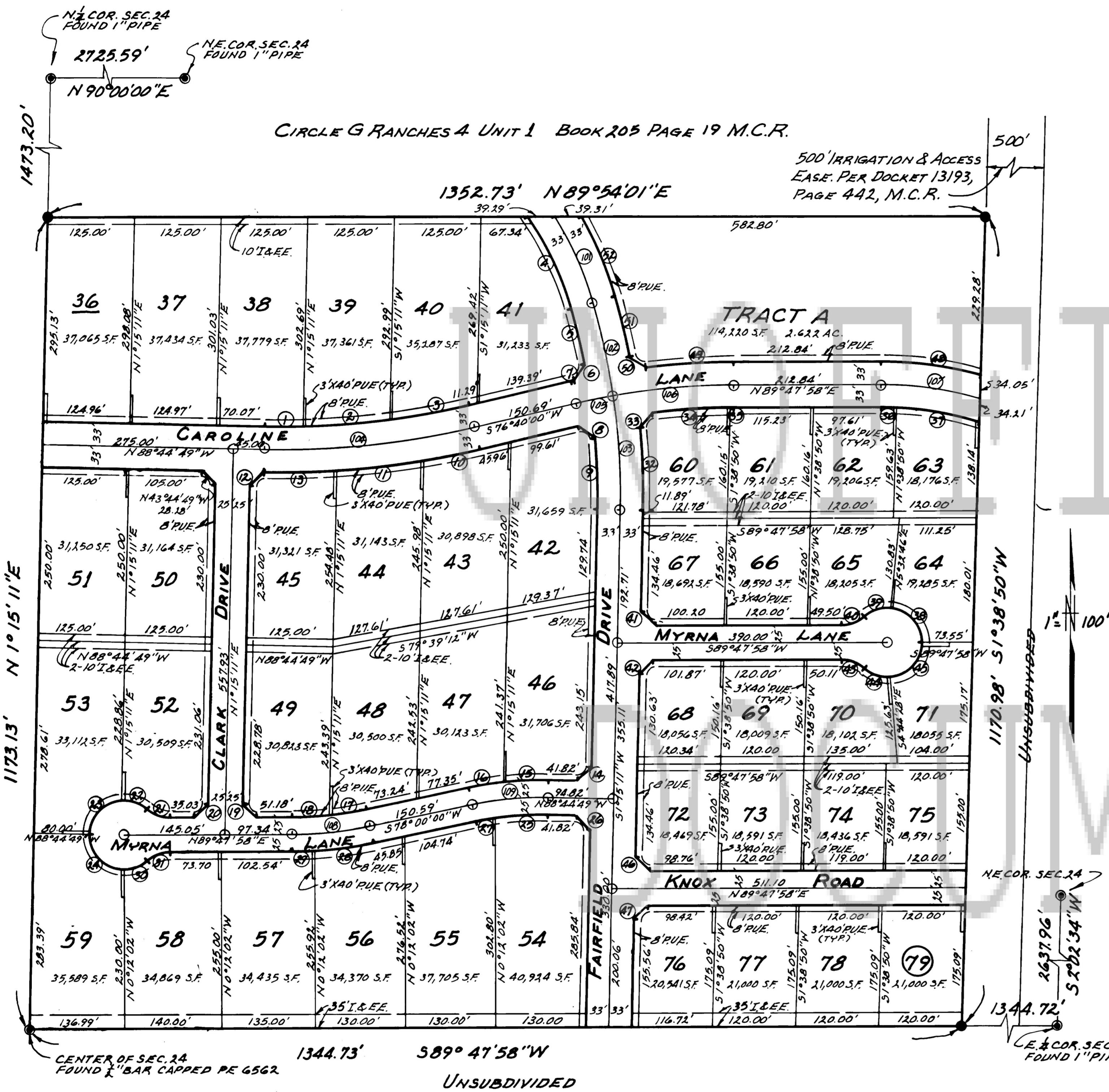


THE FINAL PLAT AND P.A.D. MAP OF
Circle G Ranches 4 Unit 2
 A SUBDIVISION & P.A.D. IN THE N.E. 1/4, SEC. 24, T.1S, R.4E, G&SRB&M, MARICOPA COUNTY, ARIZONA

- LEGEND
- SET SURVEY MONUMENT
 - CORNER THIS DEVELOPMENT
 - ⊙ EXIST. SURVEY MONUMENT
 - PUE: PUBLIC UTILITY EASEMENT
 - I&EE: IRRIGATION & EQUESTRIAN EASEMENT

- NOTES:
1. CONSTRUCTION WITHIN P.U.E.'S TO BE LIMITED TO PUBLIC UTILITIES, & WOOD, WIRE OR REMOVABLE SECTION FENCING ONLY.
 2. ALL TELEPHONE LINES SHALL BE CONSTRUCTED UNDERGROUND AS REQUIRED BY ARIZONA CORPORATION COMMISSION GENERAL ORDER R-14-2-133.

- VARIANCES:
- A) REDUCTION OF FRONT AND STREET SIDE YARD SETBACK FROM 40' AND 25' TO 15' AND 15' FOR COMMON AREA.
 - B) REDUCTION FROM 1 HORSE PER 6000 SQ. FT. TO 1 HORSE PER 3300 SQ. FT. AFTER THE FIRST ONE HALF ACRE FOR COMMON AREA.
 - C) REDUCTION IN LOT WIDTH FROM 115' TO 90' IN R1-15 ZONING DISTRICT.
 - D) REDUCTION OF LOT SIZES TO LESS THAN 1 ACRE IN THE AG DISTRICT.
 - E) NO TYPICAL FLOOR PLANS AND ELEVATIONS FOR LOCATION OF DRIVEWAYS.



LOT CURVE DATA

LOT#	CURVE#	DELTA	RADIUS	LENGTH	TANGENT
38	1	2°12'46"	1167.00'	54.92'	27.46'
39	2	6°10'11"	1167.00'	125.66'	62.89'
40	3	5°43'18"	1167.00'	116.52'	58.51'
41	4	1°02'57"	467.00'	147.79'	74.52'
41	5	4°51'41"	967.00'	82.05'	41.05'
41	6	N 32°50'12"E	27.83'		
41	7	0°19'17"	1033.00'	4.64'	1.32'
42	8	N 54°04'12"W	30.31'		
42	9	6°03'37"	967.00'	102.28'	51.19'
43	10	3°50'48"	1233.00'	82.58'	41.89'
44	11	5°51'56"	1233.00'	126.23'	63.17'
45	12	N 46°15'11"E	28.28'		
45	13	4°53'06"	1233.00'	105.13'	52.59'
46	14	N 46°15'11"E	28.28'		
46	15	7°27'35"	500.00'	65.10'	32.60'
47	16	5°47'36"	500.00'	50.56'	25.30'
48	17	5°57'36"	525.00'	54.61'	27.33'
49	18	5°50'22"	525.00'	53.51'	26.78'
49	19	N 44°28'26"W	28.64'		
52	20	N 45°31'34"E	27.92'		
52	21	4°24'35"	50.00'	36.14'	18.90'
52	22	4°51'43"	50.00'	39.88'	21.07'
53	23	84°15'39"	50.00'	73.53'	45.23'
59	24	9°16'23"	50.00'	79.65'	51.12'
54	25	9°42'01"	450.00'	76.18'	38.18'
54	26	N 43°44'49"W	28.28'		
55	27	3°33'10"	450.00'	27.98'	13.96'
56	28	8°33'48"	575.00'	85.94'	43.05'
57	29	3°04'10"	575.00'	32.48'	16.24'
58	30	4°35'25"	50.00'	36.29'	18.99'
58	31	4°12'35"	50.00'	36.14'	18.90'
60	32	6°37'34"	1033.00'	119.46'	59.80'
60	33	N 38°42'52"E	27.83'		
60	34	6°42'53"	967.00'	113.33'	56.75'
61	35	0°16'58"	967.00'	4.77'	1.39'
62	36	2°44'45"	467.00'	22.38'	11.19'
63	37	14°54'54"	467.00'	121.57'	61.13'
64	38	84°15'12"	50.00'	73.53'	45.22'
65	39	47°09'23"	50.00'	41.15'	21.82'
65	40	41°24'35"	50.00'	36.14'	18.90'
67	41	N 44°28'26"W	28.64'		
68	42	N 45°31'35"E	27.92'		
70	43	4°24'35"	50.00'	36.14'	18.90'
70	44	4°51'43"	50.00'	40.10'	21.20'
71	45	85°27'34"	50.00'	74.58'	46.19'
72	46	N 44°28'26"W	28.64'		
76	47	N 45°31'35"E	27.92'		
TRACT A	48	15°39'39"	533.00'	145.69'	73.30'
TRACT A	49	7°06'16"	1033.00'	128.09'	64.13'
TRACT A	50	N 54°13'28"W	27.32'		
TRACT A	51	4°58'05"	1033.00'	89.57'	44.81'
TRACT A	52	13°26'44"	533.00'	125.08'	62.83'

STATE OF ARIZONA
 County of Maricopa } ss
 I hereby certify that the within instrument was filed and recorded at request of **CITY OF TEMPE**
 DEC 27 1978 - 10 34
 in Book 207
 on page 2
 Witness my hand and official seal the 27th day of December, 1978.
 Bill Henry
 County Recorder
 (Seal)

DEDICATION:
 STATE OF ARIZONA ss
 COUNTY OF MARICOPA ss
 KNOW ALL MEN BY THESE PRESENTS THAT COMMONWEALTH TITLE OF ARIZONA AN ARIZONA CORPORATION, AS TRUSTEE, HAS SUBDIVIDED UNDER THE NAME OF CIRCLE G RANCHES 4, UNIT 2, A PART OF THE NE 1/4 OF SECTION 24, T.1S., R.4E., G&S.R.B.&M., MARICOPA COUNTY, ARIZONA, AS SHOWN PLATTED HEREON AND HEREBY PUBLISHES THIS PLAT AS AND FOR THE PLAT OF SAID CIRCLE G RANCHES 4, UNIT 2, COMMONWEALTH TITLE OF ARIZONA. I DECLARE THAT THIS PLAT SETS FORTH THE LOCATION AND GIVES THE DIMENSIONS OF THE LOTS, AND STREETS CONSTITUTING THE SUBDIVISION, EACH LOT AND STREET SHALL BE KNOWN BY THE NUMBER OF THE GIVE EACH RESPECTIVELY ON THIS PLAT AND COMMONWEALTH TITLE OF ARIZONA AS TRUSTEE, HEREBY DEDICATES TO THE PUBLIC FOR USE AS SUCH THE STREETS SHOWN ON SAID PLAT AND INCLUDED IN THE ABOVE DESCRIBED PREMISES.

EASEMENTS ARE PROVIDED FOR THE PURPOSES SHOWN.
 IN WITNESS WHEREOF, THE COMMONWEALTH TITLE OF ARIZONA, AN ARIZONA CORPORATION, AS TRUSTEE, HAS HEREUNTO CAUSED ITS CORPORATE SEAL TO BE AFFIXED AND THE SAME TO BE ATTESTED BY THE SIGNATURE OF THE UNDERSIGNED OFFICER THEREUNTO DULY AUTHORIZED THIS 6th DAY OF December, 1978.
 COMMONWEALTH TITLE OF ARIZONA AS TRUSTEE
 BY: Richard L. Benson, SENIOR TRUST OFFICER.

ACKNOWLEDGEMENT:
 STATE OF ARIZONA ss
 COUNTY OF MARICOPA ss
 ON THIS THE 10th DAY OF December, 1978, BEFORE ME, THE UNDERSIGNED OFFICER PERSONALLY APPEARED RICHARD L. BENSON, WHO ACKNOWLEDGED HIMSELF TO BE TRUST OFFICER OF THE COMMONWEALTH TITLE OF ARIZONA, AN ARIZONA CORPORATION, AND THAT HE AS SUCH OFFICER, BEING AUTHORIZED TO DO SO, EXECUTED THE FOREGOING INSTRUMENT FOR THE PURPOSES THEREIN CONTAINED BY SIGNING THE NAME OF THE CORPORATION, AS TRUSTEE, BY HIMSELF AS TRUST OFFICER.
 IN WITNESS WHEREOF, I HEREBY SET MY HAND AND OFFICIAL SEAL, MY COMMISSION EXPIRES

NOTARY PUBLIC Linda K. Quinn My Commission Expires 11-22-78

ENGINEER'S CERTIFICATE:
 I, WILLIAM J. NORMAN, HEREBY CERTIFY THAT I AM A CIVIL ENGINEER REGISTERED IN THE STATE OF ARIZONA; THAT THIS MAP, CONSISTING OF 1 SHEET CORRECTLY REPRESENTS A SURVEY MADE UNDER MY SUPERVISION IN MARCH 1978; THAT THE SURVEY IS TRUE AND COMPLETE AS SHOWN; THAT ALL THE MONUMENTS SHOWN ACTUALLY EXIST OR WILL BE SET AS SHOWN; THAT THEIR POSITIONS ARE CORRECTLY SHOWN AND THAT SAID MONUMENTS ARE SUFFICIENT TO ENABLE THE SURVEY TO BE RETRACED.

BY: William J. Norman, P.E. 53
 (Professional Engineer Seal)

APPROVALS:
 CITY ENGINEER
 BY: Norm Quinn 12-22-78
 DATE

PLANNING DIRECTOR
 BY: Norm Quinn 12/22/78
 DATE

APPROVED BY THE COUNCIL OF THE CITY OF TEMPE, ARIZONA, THIS 20th DAY OF April, 1978.

BY: Harry E. Mitchell
 MAYOR
 ATTEST: Pauline J. Jampton
 CITY CLERK

STREET CENTERLINE CURVE DATA

CURVE#	DELTA	RADIUS	LENGTH	TANGENT
1	15°36'18"	300.00'	136.18'	68.51'
2	7°52'41"	1000.00'	137.50'	68.88'
3	9°29'13"	1000.00'	169.58'	82.98'
4	14°35'11"	1200.00'	305.90'	153.58'
5	3°07'06"	1000.00'	54.42'	27.22'
6	10°00'52"	1000.00'	174.79'	87.62'
7		500.00'		
8	11°27'58"	550.00'	113.27'	56.83'
9	13°15'11"	475.00'	109.87'	55.18'

William J. Norman
 civil engineer
 1085 N. Evergreen Street
 Chandler, Arizona 85224
 (602) 963-1484

GROSS AREA = 36,275 AC
 NET AREA = 29,916 AC